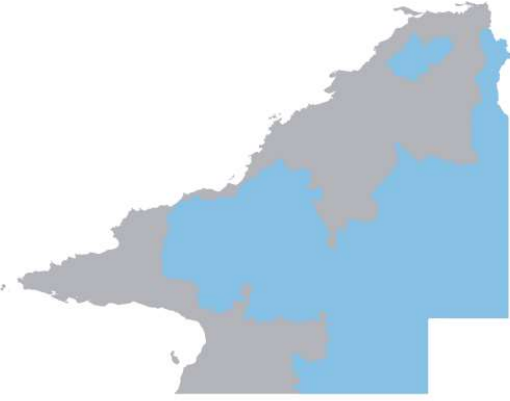


2022 DISASTER PREPAREDNESS IN

QUEENSLAND RURAL AND REMOTE COMMUNITIES



QUEENSLAND RURAL AND REMOTE COMMUNITIES

People who live in Queensland Rural and Remote communities were asked what extreme weather could happen where they live and what they are doing to get ready.

This region covers the following:

Northern Queensland

- Mareeba
- Croydon
- Etheridge
- Tablelands
- Charters Towers
- Flinders
- Richmond
- McKinlay

Southern Queensland

- Boulia
- Winton
- Longreach
- Blackall-
- Tambo
- Barcoo
- Diamantina
- Quilpie
- Murweh
- Bulloo
- Paroo
- Balonne
- Goondiwindi
- Southern Downs
- North Burnett
- South Burnett

Rural and Remote communities rank their disaster risks



7.19
Severe Storm



3.67
Cyclone



4.63
Flood



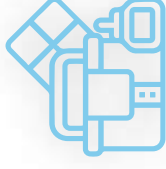
4.05
Bushfire

Scale of 1 to 10 (0 is unlikely and 10 is extremely likely)

DISASTER PREPAREDNESS BEHAVIOURS



51% are registered for emergency alerts



61% have an Emergency Kit



64% have an emergency plan



91% have building and/or contents insurance

3 STEPS TO GET READY

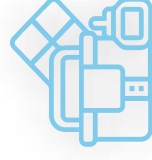


1. Understand your **risk**

Having a plan means your household is ready for extreme weather, with important contacts and household information that is right for you, your family, your pets and your property.



2. Prepare a **household emergency plan**



3. Pack an **emergency kit**