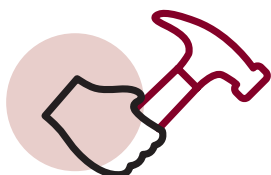


DANGEROUS WEATHER CHECK LISTS

Protect your family, animals and home.

getready.qld.gov.au

A guide to help your household get ready for dangerous weather.



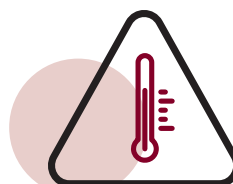
ALL WEATHER
JOBS



STORMS AND
CYCLONES



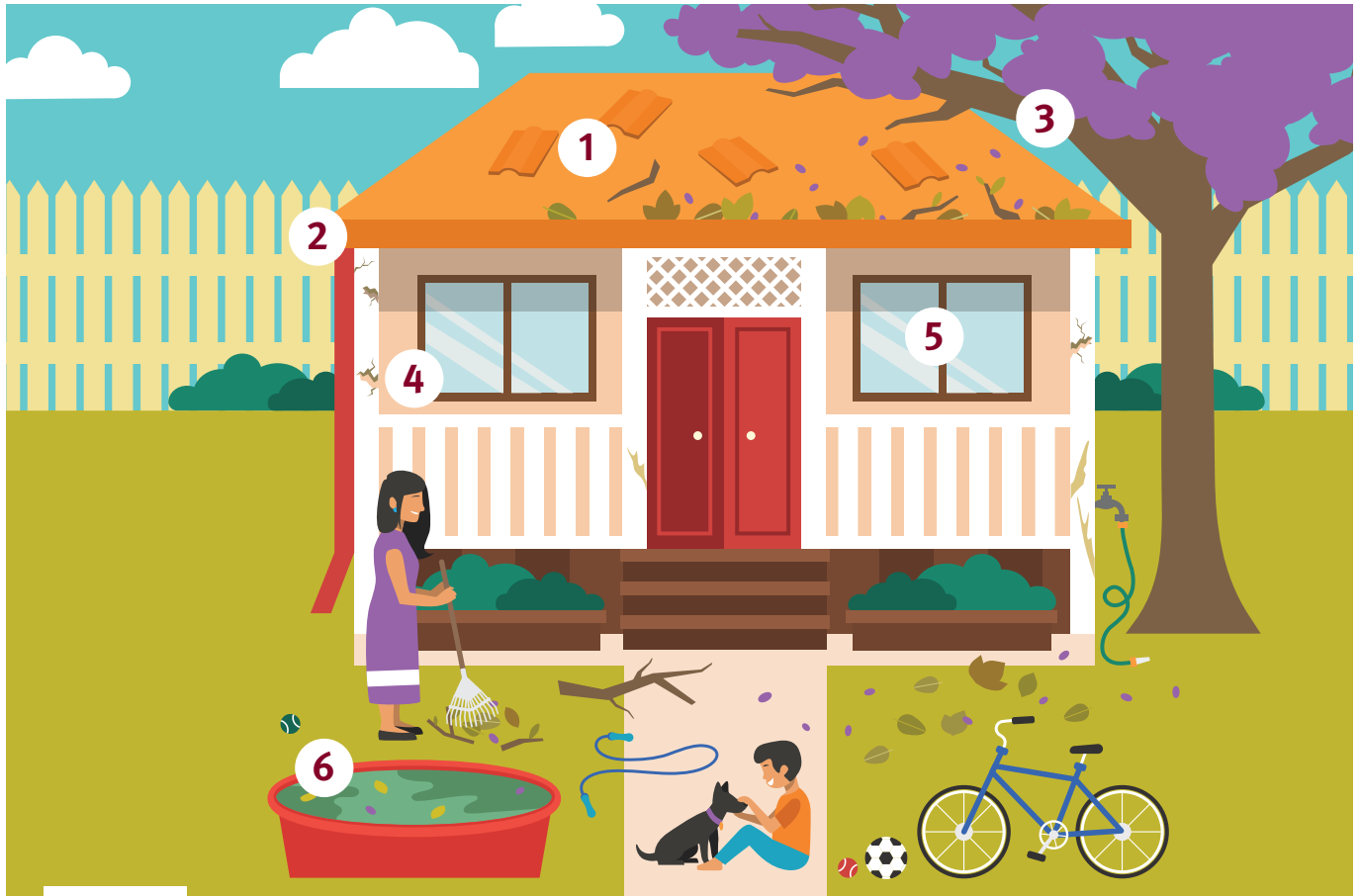
BUSHFIRES



HEATWAVES

ALL WEATHER JOBS

JOBS AROUND THE HOME TO KEEP YOU SAFE



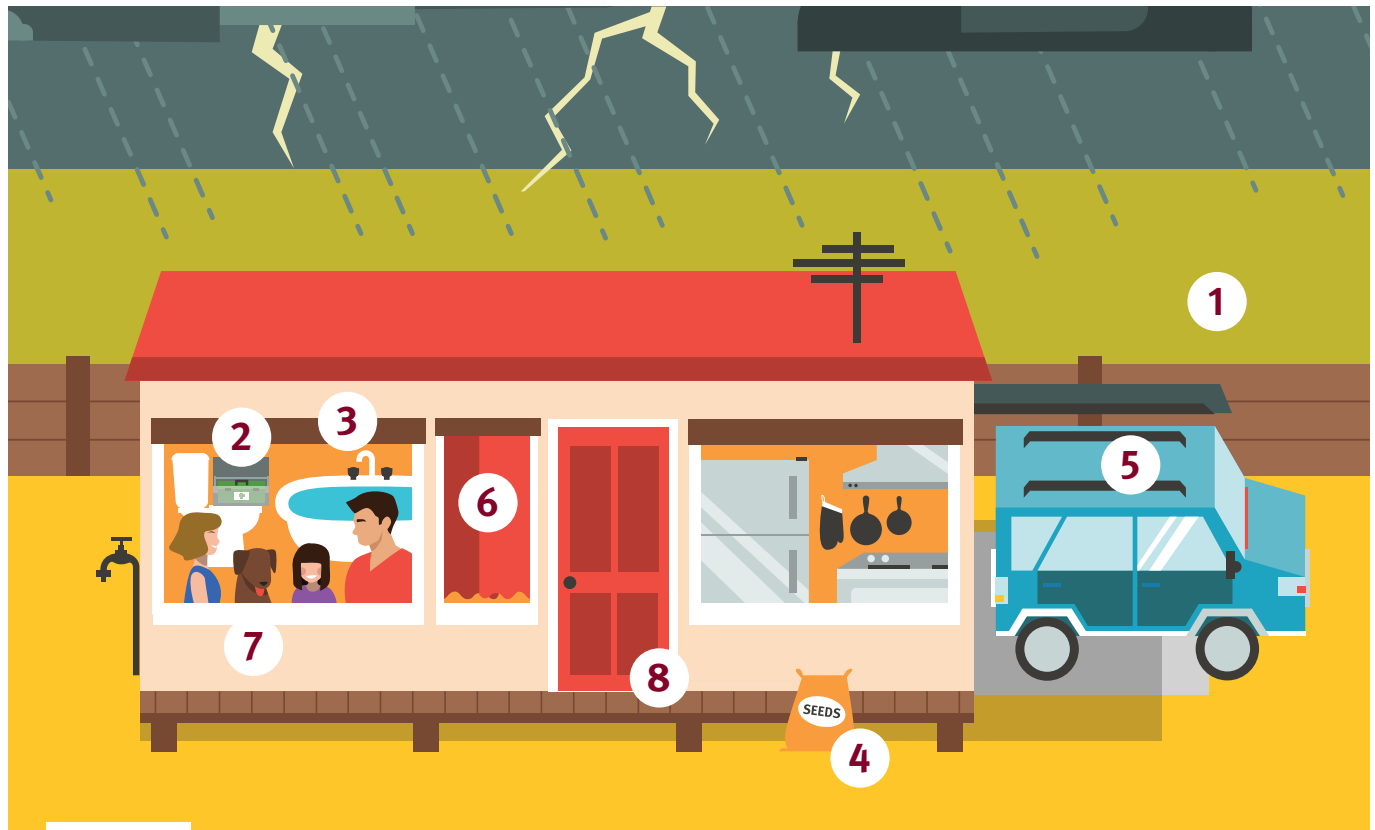
TO DO

- ☐ 1. Check the roof. Tiles, iron, gutters or eaves may need to be fixed by a roofer.
- ☐ 2. Clean gutters and down pipes.
- ☐ 3. Cut back trees and branches that are close to your home.
- ☐ 4. Talk to a builder about any structural damage around your home.
- ☐ 5. Make sure windows are sealed correctly.
- ☐ 6. Stop mosquitoes by tipping out water from containers.
- ☐ 7. Check with your insurer to make sure your home and belongings are correctly insured for dangerous weather.

Renting? Talk to your property manager about preparing your home for dangerous weather.

STORMS AND CYCLONES

WHAT TO DO WHEN A STORM OR CYCLONE ALERT HAS BEEN GIVEN



TO DO

- ☐ 1. Stay informed by:
 - local ABC radio station.
 - local council disaster dashboard (online).
 - the Bureau of Meteorology mobile app.
 - Queensland Fire and Emergency Services social media.
- ☐ 2. Get your emergency kit out of storage.
- ☐ 3. Fill the bathtub with water as a back-up supply.
- ☐ 4. Put away or secure outdoor items, like toys, gardening tools and furniture that could blow or wash away.
- ☐ 5. Put fuel in your car and park it undercover or up a hill if you are in a flood zone.
- ☐ 6. Close windows and curtains or blinds.
- ☐ 7. Move animals to a sheltered or safe place.
- ☐ 8. If your house may flood, sandbag the doors and indoor drains.
- ☐ 9. If you have to evacuate (leave quickly) turn off electricity (power), water and gas.

BUSHFIRES

WHAT TO DO WHEN BUSHFIRE ADVICE HAS BEEN GIVEN



TO DO

- ☐ 1. Have a plan to either:
 - leave early (your safest option).
 - stay and defend (you need to be very well prepared) – find important information at: www.qfes.qld.gov.au/prepare/bushfire/will-you-stay
- ☐ 2. Stay informed by:
 - local ABC radio station.
 - local council disaster dashboard (online).
 - the Bureau of Meteorology mobile app.
 - Queensland Fire and Emergency Services social media.
- ☐ 3. Get your emergency kit out of storage.
- ☐ 4. Put fuel in your car and move it to a safe spot.
- ☐ 5. Remove external door mats, furniture and other items that could catch on fire.
- ☐ 6. Cut back branches that are growing near buildings and rake up leaves, bark and twigs.
- ☐ 7. Move garden waste and rubbish away from home, buildings and fence line.
- ☐ 8. Ensure access to a water supply, for example:
 - water tanks, swimming pool or dam, hoses, watering systems (turn on sprinklers to wet the ground).
- ☐ 9. Make sure fire trucks have a clear path to your property by cleaning away anything blocking the driveway and unlocking gates.
- ☐ 10. Move outdoor animals to open, cleared areas and take pets inside.

Learn more: www.qfes.qld.gov.au/bushfires

HEATWAVES

WHAT TO DO WHEN A HEATWAVE IS PREDICTED



TO DO

- ☐ 1. Drink lots of water during the day.
- ☐ 2. Put on sunscreen.
- ☐ 3. Wear lightweight and light-coloured clothes and a hat.
- ☐ 4. Rest in the shade or indoors.
- ☐ 5. Try not to have caffeine, sugar and alcohol.
- ☐ 6. Never leave children or animals in vehicles.
- ☐ 7. Make sure animals have access to water and shade.
- ☐ 8. Use fans or air-conditioning to stay cool.
- ☐ 9. Understand symptoms of heat sickness:
 - feeling sick or vomiting.
 - dizzy or weak.
 - clumsy, light-headed or fainting.
 - fast breathing or short of breath.
 - fast or weak pulse (heartbeat).
 - high temperature.
 - red, dry skin.

YOUR ANIMALS

WHAT WILL HAPPEN TO YOUR ANIMALS IN DANGEROUS WEATHER?



TO DO

- ☐ 1. Plan where to take your pet or animals if it is not safe to stay.
- ☐ 2. Plan how pets or animals will be transported in an emergency.
- ☐ 3. Plan to have neighbours or friends help, if you cannot get home or need assistance.
- ☐ 4. Have your pet microchipped and registered with your local council.
- ☐ 5. Have a pet emergency kit (see next page) ready to go to save you time.
- ☐ 6. If you must leave your pets behind, leave them indoors (if possible) and in separate rooms like the bathroom or laundry. Provide food and water in large heavy bowls.
- ☐ 7. Talk to your vet about any special needs for your pet.

PET EMERGENCY KIT LIST



- ☐ 1. Food and water, plus can-opener and bowls.
- ☐ 2. Medicines and instructions.
- ☐ 3. Cage or crate and covers.
- ☐ 4. Bedding.
- ☐ 5. Toys.
- ☐ 6. Vaccination papers, registration number and current photos.
- ☐ 7. Tags, harness, halteres or leash.
- ☐ 8. Litter tray, waste bags and cleaning items.
- ☐ 9. Vet and local council contact details.
- ☐ 10. Evidence that your pet is a trained service animal.
- ☐ 11. Pet insurance paperwork.

